

DEC 13 - 19, 2021

The Manhattan luxury real estate market, defined as all properties priced \$3.5M and above, saw 55 contracts signed this week, made up of 40 condos, 10 coops, and 5 houses. The previous week saw 39 deals. For more information or data, please reach out to a Compass agent.

\$7,458,709

Average Asking Price

\$6,150,000

Median Asking Price

\$2,542

Average PPSF

3%

Average Discount

\$410,228,990

Total Volume

278

Average Days On Market

Unit 15A at 378 West End Avenue on the Upper West Side entered contract this week, with a last asking price of \$25,950,000. Built in 2021, this condo spans 7,485 square feet with 6 beds and 7 full bathrooms. It features a wrap terrace, a chef's kitchen with high-end appliances and pocket doors, a primary bedroom suite with ensuite bath and terrace access, a skylight, and much more. The building provides a number of amenities, including a 75-foot lap pool, a private garage and drop off, parking, a private garden, a music recording studio and practice room, a fitness center, a full-time doorman, and more.

Also signed this week was Penthouse 19W at 135 East 79th Street on the Upper East Side, with a last asking price of \$20,000,000. Built in 2012, this duplex condo spans 5,425 square feet with 5 beds and 4 full baths. It features a private elevator, a large gallery, a library, an octagonal dining room, a hand-painted kitchen with stone slab counters and high-end appliances, a primary suite with south-facing bedroom and a marble-clad five-fixture bathroom, and much more. The building provides a doorman, concierge, resident manager, fitness center, landscaped private garden courtyard, and many other amenities.

40

Condo Deal(s)

10

Co-op Deal(s)

5

Townhouse Deal(s)

\$7,408,475

Average Asking Price

\$6,364,500

Average Asking Price

\$10,049,000

Average Asking Price

\$6,072,500

Median Asking Price

\$5,700,000

Median Asking Price

\$10,400,000

Median Asking Price

\$2,653

Average PPSF

\$2,139

Average PPSF

\$2,214

Average PPSF

2,734

Average SqFt

3,171

Average SqFt

4,612

Average SqFt



378 W END AVE #15A

Upper West Side

| | | | | | | | |
|------|----------|--------|----------|------|--------------|---------|--------------|
| Type | Condo | Status | Contract | Ask | \$25,950,000 | Initial | \$25,950,000 |
| SqFt | 7,485 | PPSF | \$3,467 | Beds | 6 | Baths | 7.5 |
| Fees | \$19,732 | DOM | 248 | | | | |



135 E 79 ST #PH19W

Upper East Side

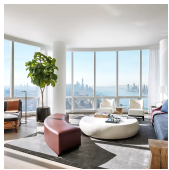
| | | | | | | | |
|------|----------|--------|----------|------|--------------|---------|--------------|
| Type | Condo | Status | Contract | Ask | \$20,000,000 | Initial | \$22,500,000 |
| SqFt | 5,425 | PPSF | \$3,687 | Beds | 5 | Baths | 4.5 |
| Fees | \$18,510 | DOM | 250 | | | | |



443 GREENWICH ST #2/3E

Tribeca

| | | | | | | | |
|------|----------|--------|----------|------|--------------|---------|--------------|
| Type | Condo | Status | Contract | Ask | \$13,995,000 | Initial | \$16,750,000 |
| SqFt | 4,522 | PPSF | \$3,095 | Beds | 3 | Baths | 5.5 |
| Fees | \$15,513 | DOM | 438 | | | | |



15 HUDSON YARDS #PH83A

Hudson Yards

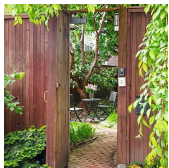
| | | | | | | | |
|------|---------|--------|----------|------|--------------|---------|--------------|
| Type | Condo | Status | Contract | Ask | \$13,810,000 | Initial | \$13,810,000 |
| SqFt | 3,405 | PPSF | \$4,056 | Beds | 4 | Baths | 4.5 |
| Fees | \$8,917 | DOM | 680 | | | | |



33 GREENE ST #3W

Soho

| | | | | | | | |
|------|---------|--------|----------|------|--------------|---------|--------------|
| Type | Coop | Status | Contract | Ask | \$11,995,000 | Initial | \$11,995,000 |
| SqFt | 4,200 | PPSF | \$2,856 | Beds | 3 | Baths | 3.5 |
| Fees | \$4,113 | DOM | 66 | | | | |

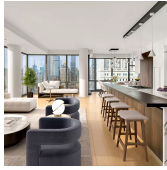


54 7 AVE

Greenwich Village

| | | | | | | | |
|------|-----------|--------|----------|------|--------------|---------|--------------|
| Type | Townhouse | Status | Contract | Ask | \$11,950,000 | Initial | \$11,950,000 |
| SqFt | 5,820 | PPSF | \$2,054 | Beds | 6 | Baths | 4.5 |
| Fees | \$1,575 | DOM | 188 | | | | |

Compass is a licensed real estate broker and abides by Equal Housing Opportunity laws. All material presented herein is intended for informational purposes only. Information is compiled from sources deemed reliable but is subject to errors, omissions, changes in price, condition, sale, or withdrawal without notice. No statement is made as to the accuracy of any description. All measurements and square footages are approximate. This is not intended to solicit property already listed. Nothing herein shall be construed as legal, accounting or other professional advice outside the realm of real estate brokerage.



ONE MADISON #40A

Flatiron District

| | | | | | | | |
|-------------|----------|---------------|----------|-------------|--------------|----------------|--------------|
| Type | Condo | Status | Contract | Ask | \$11,950,000 | Initial | \$11,950,000 |
| Sqft | 3,310 | PPSF | \$3,611 | Beds | 4 | Baths | 4.5 |
| Fees | \$12,080 | DOM | 127 | | | | |



10 BANK ST

West Village

| | | | | | | | |
|-------------|-----------|---------------|----------|-------------|--------------|----------------|--------------|
| Type | Townhouse | Status | Contract | Ask | \$11,700,000 | Initial | \$10,700,000 |
| Sqft | 4,000 | PPSF | \$2,925 | Beds | 5 | Baths | 5 |
| Fees | \$2,425 | DOM | 691 | | | | |



145 HUDSON ST #14B

Tribeca

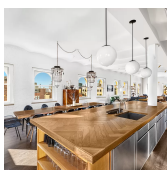
| | | | | | | | |
|-------------|----------|---------------|----------|-------------|--------------|----------------|-----|
| Type | Condo | Status | Contract | Ask | \$11,000,000 | Initial | N/A |
| Sqft | 4,120 | PPSF | \$2,670 | Beds | 3 | Baths | 3 |
| Fees | \$11,746 | DOM | N/A | | | | |



244 W 12 ST

West Village

| | | | | | | | |
|-------------|-----------|---------------|----------|-------------|--------------|----------------|--------------|
| Type | Townhouse | Status | Contract | Ask | \$10,400,000 | Initial | \$10,900,000 |
| Sqft | 4,138 | PPSF | \$2,514 | Beds | 4 | Baths | 3.5 |
| Fees | \$4,829 | DOM | 545 | | | | |



429 GREENWICH ST #9B

Tribeca

| | | | | | | | |
|-------------|---------|---------------|----------|-------------|-------------|----------------|--------------|
| Type | Condo | Status | Contract | Ask | \$9,995,000 | Initial | \$10,500,000 |
| Sqft | 4,000 | PPSF | \$2,499 | Beds | 3 | Baths | 4 |
| Fees | \$7,789 | DOM | 322 | | | | |

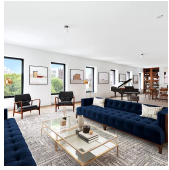


15 HUDSON YARDS #79B

Hudson Yards

| | | | | | | | |
|-------------|---------|---------------|----------|-------------|-------------|----------------|-------------|
| Type | Condo | Status | Contract | Ask | \$9,975,000 | Initial | \$9,975,000 |
| Sqft | 3,058 | PPSF | \$3,262 | Beds | 4 | Baths | 4.5 |
| Fees | \$7,997 | DOM | 159 | | | | |

Compass is a licensed real estate broker and abides by Equal Housing Opportunity laws. All material presented herein is intended for informational purposes only. Information is compiled from sources deemed reliable but is subject to errors, omissions, changes in price, condition, sale, or withdrawal without notice. No statement is made as to the accuracy of any description. All measurements and square footages are approximate. This is not intended to solicit property already listed. Nothing herein shall be construed as legal, accounting or other professional advice outside the realm of real estate brokerage.



500 W 22 ST #6A

| | | | | | | | |
|-------------|----------|---------------|----------|-------------|-------------|----------------|-------------|
| Type | Condo | Status | Contract | Ask | \$9,650,000 | Initial | \$9,650,000 |
| Sqft | 3,443 | PPSF | \$2,803 | Beds | 4 | Baths | 4.5 |
| Fees | \$10,475 | DOM | 228 | | | | |



155 W 11 ST #14B

Greenwich Village

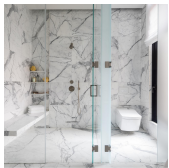
| | | | | | | | |
|-------------|---------|---------------|----------|-------------|-------------|----------------|--------------|
| Type | Condo | Status | Contract | Ask | \$9,250,000 | Initial | \$11,000,000 |
| Sqft | 2,547 | PPSF | \$3,632 | Beds | 3 | Baths | 3.5 |
| Fees | \$9,590 | DOM | 345 | | | | |



8 W 20 ST #8

Upper West Side

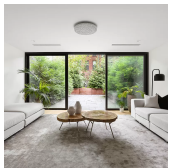
| | | | | | | | |
|-------------|-------|---------------|----------|-------------|-------------|----------------|-------------|
| Type | Coop | Status | Contract | Ask | \$9,000,000 | Initial | \$9,000,000 |
| Sqft | 4,100 | PPSF | \$2,196 | Beds | 4 | Baths | 3.5 |
| Fees | N/A | DOM | 66 | | | | |



111 LEROY ST #PH

West Village

| | | | | | | | |
|-------------|----------|---------------|----------|-------------|-------------|----------------|-------------|
| Type | Condo | Status | Contract | Ask | \$8,995,000 | Initial | \$9,500,000 |
| Sqft | 2,985 | PPSF | \$3,014 | Beds | 2 | Baths | 2 |
| Fees | \$11,781 | DOM | 240 | | | | |



165 E 94 ST

Carnegie Hill

| | | | | | | | |
|-------------|-----------|---------------|----------|-------------|-------------|----------------|-------------|
| Type | Townhouse | Status | Contract | Ask | \$8,795,000 | Initial | \$9,250,000 |
| Sqft | 5,100 | PPSF | \$1,725 | Beds | 6 | Baths | 6 |
| Fees | \$3,333 | DOM | 512 | | | | |



15 E 30 ST #56A

Nomad

| | | | | | | | |
|-------------|---------|---------------|----------|-------------|-------------|----------------|-------------|
| Type | Condo | Status | Contract | Ask | \$8,750,000 | Initial | \$8,750,000 |
| Sqft | 2,485 | PPSF | \$3,522 | Beds | 3 | Baths | 3.5 |
| Fees | \$8,476 | DOM | 21 | | | | |

Compass is a licensed real estate broker and abides by Equal Housing Opportunity laws. All material presented herein is intended for informational purposes only. Information is compiled from sources deemed reliable but is subject to errors, omissions, changes in price, condition, sale, or withdrawal without notice. No statement is made as to the accuracy of any description. All measurements and square footages are approximate. This is not intended to solicit property already listed. Nothing herein shall be construed as legal, accounting or other professional advice outside the realm of real estate brokerage.



519 E 84 ST

Yorkville

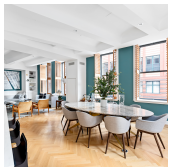
| | | | | | | | |
|-------------|-----------|---------------|----------|-------------|-------------|----------------|-------------|
| Type | Townhouse | Status | Contract | Ask | \$7,400,000 | Initial | \$7,700,000 |
| Sqft | 4,000 | PPSF | \$1,850 | Beds | 4 | Baths | 4 |
| Fees | \$3,398 | DOM | 256 | | | | |



285 LAFAYETTE ST #4D

Nolita

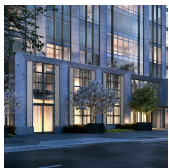
| | | | | | | | |
|-------------|---------|---------------|----------|-------------|-------------|----------------|-----|
| Type | Condo | Status | Contract | Ask | \$7,200,000 | Initial | N/A |
| Sqft | 2,750 | PPSF | \$2,619 | Beds | 2 | Baths | 1.5 |
| Fees | \$4,043 | DOM | N/A | | | | |



275 W 10 ST #C

West Village

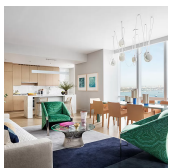
| | | | | | | | |
|-------------|---------|---------------|----------|-------------|-------------|----------------|-------------|
| Type | Condo | Status | Contract | Ask | \$6,995,000 | Initial | \$6,995,000 |
| Sqft | 2,500 | PPSF | \$2,798 | Beds | 3 | Baths | 3 |
| Fees | \$5,963 | DOM | 287 | | | | |



200 AMSTERDAM AVE #27C

Upper West Side

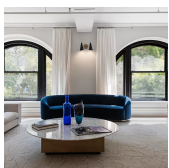
| | | | | | | | |
|-------------|---------|---------------|----------|-------------|-------------|----------------|-------------|
| Type | Condo | Status | Contract | Ask | \$6,795,000 | Initial | \$6,595,000 |
| Sqft | 2,092 | PPSF | \$3,249 | Beds | 2 | Baths | 2.5 |
| Fees | \$5,870 | DOM | 49 | | | | |



15 HUDSON YARDS #36H

Hudson Yards

| | | | | | | | |
|-------------|---------|---------------|----------|-------------|-------------|----------------|-----|
| Type | Condo | Status | Contract | Ask | \$6,590,000 | Initial | N/A |
| Sqft | 2,215 | PPSF | \$2,976 | Beds | 3 | Baths | 3 |
| Fees | \$5,375 | DOM | N/A | | | | |

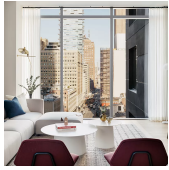


260 W BROADWAY #3E

Tribeca

| | | | | | | | |
|-------------|---------|---------------|----------|-------------|-------------|----------------|-------------|
| Type | Condo | Status | Contract | Ask | \$6,500,000 | Initial | \$6,500,000 |
| Sqft | 3,800 | PPSF | \$1,711 | Beds | 5 | Baths | 3.5 |
| Fees | \$9,328 | DOM | 86 | | | | |

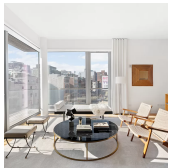
Compass is a licensed real estate broker and abides by Equal Housing Opportunity laws. All material presented herein is intended for informational purposes only. Information is compiled from sources deemed reliable but is subject to errors, omissions, changes in price, condition, sale, or withdrawal without notice. No statement is made as to the accuracy of any description. All measurements and square footages are approximate. This is not intended to solicit property already listed. Nothing herein shall be construed as legal, accounting or other professional advice outside the realm of real estate brokerage.



30 WARREN ST #PH2

Tribeca

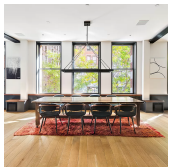
| | | | | | | | |
|-------------|---------|---------------|----------|-------------|-------------|----------------|-------------|
| Type | Condo | Status | Contract | Ask | \$6,495,000 | Initial | \$6,495,000 |
| Sqft | 2,652 | PPSF | \$2,450 | Beds | 3 | Baths | 3 |
| Fees | \$7,560 | DOM | 322 | | | | |



347 BOWERY #7/8

East Village

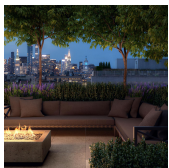
| | | | | | | | |
|-------------|---------|---------------|----------|-------------|-------------|----------------|-------------|
| Type | Condo | Status | Contract | Ask | \$6,450,000 | Initial | \$7,000,000 |
| Sqft | 2,891 | PPSF | \$2,232 | Beds | 3 | Baths | 3.5 |
| Fees | \$8,734 | DOM | 532 | | | | |



280 LAFAYETTE ST #2C

Nolita

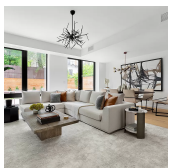
| | | | | | | | |
|-------------|---------|---------------|----------|-------------|-------------|----------------|-------------|
| Type | Coop | Status | Contract | Ask | \$6,250,000 | Initial | \$6,250,000 |
| Sqft | 3,000 | PPSF | \$2,084 | Beds | 3 | Baths | 3 |
| Fees | \$5,400 | DOM | 45 | | | | |



108 LEONARD ST #6N

Tribeca

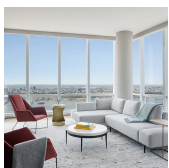
| | | | | | | | |
|-------------|---------|---------------|----------|-------------|-------------|----------------|-----|
| Type | Condo | Status | Contract | Ask | \$6,150,000 | Initial | N/A |
| Sqft | 2,479 | PPSF | \$2,481 | Beds | 4 | Baths | 4 |
| Fees | \$5,876 | DOM | N/A | | | | |



214 W 15 ST #TH1

Chelsea

| | | | | | | | |
|-------------|---------|---------------|----------|-------------|-------------|----------------|-------------|
| Type | Condo | Status | Contract | Ask | \$5,995,000 | Initial | \$6,295,000 |
| Sqft | 2,776 | PPSF | \$2,160 | Beds | 3 | Baths | 2.5 |
| Fees | \$4,285 | DOM | 82 | | | | |



15 HUDSON YARDS #65D

Hudson Yards

| | | | | | | | |
|-------------|---------|---------------|----------|-------------|-------------|----------------|-------------|
| Type | Condo | Status | Contract | Ask | \$5,915,000 | Initial | \$5,915,000 |
| Sqft | 2,014 | PPSF | \$2,937 | Beds | 2 | Baths | 2.5 |
| Fees | \$4,893 | DOM | 1,550 | | | | |

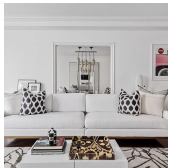
Compass is a licensed real estate broker and abides by Equal Housing Opportunity laws. All material presented herein is intended for informational purposes only. Information is compiled from sources deemed reliable but is subject to errors, omissions, changes in price, condition, sale, or withdrawal without notice. No statement is made as to the accuracy of any description. All measurements and square footages are approximate. This is not intended to solicit property already listed. Nothing herein shall be construed as legal, accounting or other professional advice outside the realm of real estate brokerage.



995 5 AVE #11N

Upper East Side

| | | | | | | | |
|-------------|----------|---------------|----------|-------------|-------------|----------------|-------------|
| Type | Coop | Status | Contract | Ask | \$5,900,000 | Initial | \$5,900,000 |
| Sqft | 2,596 | PPSF | \$2,273 | Beds | 2 | Baths | 2.5 |
| Fees | \$11,783 | DOM | 49 | | | | |



1016 5 AVE #7A

Upper East Side

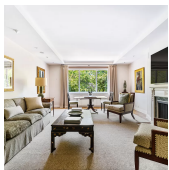
| | | | | | | | |
|-------------|---------|---------------|----------|-------------|-------------|----------------|-------------|
| Type | Coop | Status | Contract | Ask | \$5,850,000 | Initial | \$6,000,000 |
| Sqft | 3,200 | PPSF | \$1,829 | Beds | 5 | Baths | 4 |
| Fees | \$7,784 | DOM | 87 | | | | |



108 LEONARD ST #4N

Tribeca

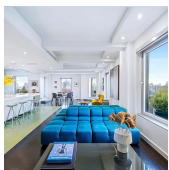
| | | | | | | | |
|-------------|---------|---------------|----------|-------------|-------------|----------------|-------------|
| Type | Condo | Status | Contract | Ask | \$5,765,000 | Initial | \$5,765,000 |
| Sqft | 2,487 | PPSF | \$2,319 | Beds | 4 | Baths | 4 |
| Fees | \$5,894 | DOM | 145 | | | | |



955 5 AVE #4B

Lenox Hill

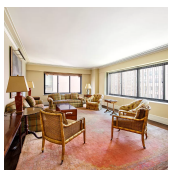
| | | | | | | | |
|-------------|---------|---------------|----------|-------------|-------------|----------------|-----|
| Type | Coop | Status | Contract | Ask | \$5,550,000 | Initial | N/A |
| Sqft | 2,200 | PPSF | \$2,523 | Beds | 3 | Baths | 3 |
| Fees | \$6,851 | DOM | N/A | | | | |



1 5 AVE #PH18EF

Greenwich Village

| | | | | | | | |
|-------------|---------|---------------|----------|-------------|-------------|----------------|-------------|
| Type | Coop | Status | Contract | Ask | \$5,500,000 | Initial | \$6,500,000 |
| Sqft | N/A | PPSF | N/A | Beds | 2 | Baths | 2 |
| Fees | \$5,897 | DOM | 430 | | | | |



733 PK AVE #7

Lenox Hill

| | | | | | | | |
|-------------|------|---------------|----------|-------------|-------------|----------------|-------------|
| Type | Coop | Status | Contract | Ask | \$5,350,000 | Initial | \$5,350,000 |
| Sqft | N/A | PPSF | N/A | Beds | 4 | Baths | 4.5 |
| Fees | N/A | DOM | 31 | | | | |

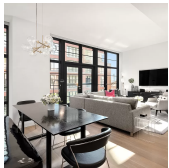
Compass is a licensed real estate broker and abides by Equal Housing Opportunity laws. All material presented herein is intended for informational purposes only. Information is compiled from sources deemed reliable but is subject to errors, omissions, changes in price, condition, sale, or withdrawal without notice. No statement is made as to the accuracy of any description. All measurements and square footages are approximate. This is not intended to solicit property already listed. Nothing herein shall be construed as legal, accounting or other professional advice outside the realm of real estate brokerage.



90 E END AVE #9A

Yorkville

| | | | | | | | |
|-------------|---------|---------------|----------|-------------|-------------|----------------|-------------|
| Type | Condo | Status | Contract | Ask | \$5,300,000 | Initial | \$5,300,000 |
| Sqft | 3,126 | PPSF | \$1,696 | Beds | 4 | Baths | 4 |
| Fees | \$9,302 | DOM | 26 | | | | |



150 CHARLES ST #3CN

West Village

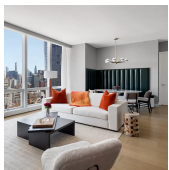
| | | | | | | | |
|-------------|---------|---------------|----------|-------------|-------------|----------------|-------------|
| Type | Condo | Status | Contract | Ask | \$4,995,000 | Initial | \$4,995,000 |
| Sqft | 1,405 | PPSF | \$3,556 | Beds | 2 | Baths | 2 |
| Fees | \$4,648 | DOM | 43 | | | | |



10 RIVERSIDE BLVD #30F

Lincoln Square

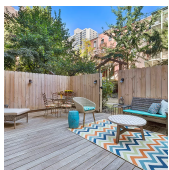
| | | | | | | | |
|-------------|---------|---------------|----------|-------------|-------------|----------------|-------------|
| Type | Condo | Status | Contract | Ask | \$4,925,000 | Initial | \$4,925,000 |
| Sqft | 1,824 | PPSF | \$2,701 | Beds | 3 | Baths | 3 |
| Fees | \$3,735 | DOM | 545 | | | | |



15 HUDSON YARDS #39C

Hudson Yards

| | | | | | | | |
|-------------|---------|---------------|----------|-------------|-------------|----------------|-----|
| Type | Condo | Status | Contract | Ask | \$4,875,000 | Initial | N/A |
| Sqft | 1,652 | PPSF | \$2,951 | Beds | 2 | Baths | 2.5 |
| Fees | \$4,050 | DOM | N/A | | | | |



33 W 93 ST #TH1C

Upper West Side

| | | | | | | | |
|-------------|------|---------------|----------|-------------|-------------|----------------|-------------|
| Type | Coop | Status | Contract | Ask | \$4,750,000 | Initial | \$4,750,000 |
| Sqft | N/A | PPSF | N/A | Beds | 4 | Baths | 3.5 |
| Fees | N/A | DOM | 56 | | | | |



15 E 30 ST #47B

Nomad

| | | | | | | | |
|-------------|---------|---------------|----------|-------------|-------------|----------------|-------------|
| Type | Condo | Status | Contract | Ask | \$4,550,000 | Initial | \$4,550,000 |
| Sqft | 1,541 | PPSF | \$2,953 | Beds | 2 | Baths | 2.5 |
| Fees | \$5,256 | DOM | 148 | | | | |

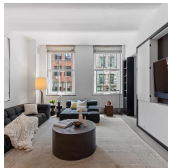
Compass is a licensed real estate broker and abides by Equal Housing Opportunity laws. All material presented herein is intended for informational purposes only. Information is compiled from sources deemed reliable but is subject to errors, omissions, changes in price, condition, sale, or withdrawal without notice. No statement is made as to the accuracy of any description. All measurements and square footages are approximate. This is not intended to solicit property already listed. Nothing herein shall be construed as legal, accounting or other professional advice outside the realm of real estate brokerage.



157 E 84 ST #THE

Upper East Side

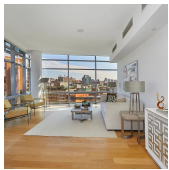
| | | | | | | | |
|-------------|---------|---------------|----------|-------------|-------------|----------------|-------------|
| Type | Condo | Status | Contract | Ask | \$4,500,000 | Initial | \$4,500,000 |
| Sqft | 4,178 | PPSF | \$1,078 | Beds | 3 | Baths | 3.5 |
| Fees | \$8,948 | DOM | 129 | | | | |



429 GREENWICH ST #2B

Tribeca

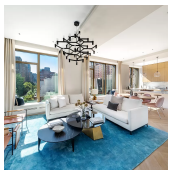
| | | | | | | | |
|-------------|---------|---------------|----------|-------------|-------------|----------------|-------------|
| Type | Condo | Status | Contract | Ask | \$4,450,000 | Initial | \$4,895,000 |
| Sqft | 2,054 | PPSF | \$2,167 | Beds | 3 | Baths | 2.5 |
| Fees | \$3,295 | DOM | 733 | | | | |



1 YORK ST #10A

Tribeca

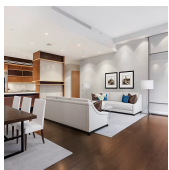
| | | | | | | | |
|-------------|---------|---------------|----------|-------------|-------------|----------------|-------------|
| Type | Condo | Status | Contract | Ask | \$4,375,000 | Initial | \$4,375,000 |
| Sqft | 1,989 | PPSF | \$2,200 | Beds | 2 | Baths | 2.5 |
| Fees | \$4,995 | DOM | 65 | | | | |



500 W 25 ST #2

Chelsea

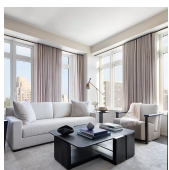
| | | | | | | | |
|-------------|---------|---------------|----------|-------------|-------------|----------------|-------------|
| Type | Condo | Status | Contract | Ask | \$4,000,000 | Initial | \$5,495,000 |
| Sqft | 2,375 | PPSF | \$1,685 | Beds | 3 | Baths | 3 |
| Fees | \$7,504 | DOM | 442 | | | | |



40 MERCER ST #21

Soho

| | | | | | | | |
|-------------|---------|---------------|----------|-------------|-------------|----------------|-------------|
| Type | Condo | Status | Contract | Ask | \$3,998,000 | Initial | \$3,998,000 |
| Sqft | 1,745 | PPSF | \$2,292 | Beds | 2 | Baths | 2.5 |
| Fees | \$7,089 | DOM | 82 | | | | |



543 W 122 ST #26A

Morningside Heights

| | | | | | | | |
|-------------|---------|---------------|----------|-------------|-------------|----------------|-------------|
| Type | Condo | Status | Contract | Ask | \$3,975,000 | Initial | \$3,975,000 |
| Sqft | 1,687 | PPSF | \$2,357 | Beds | 3 | Baths | 2.5 |
| Fees | \$3,965 | DOM | 163 | | | | |

Compass is a licensed real estate broker and abides by Equal Housing Opportunity laws. All material presented herein is intended for informational purposes only. Information is compiled from sources deemed reliable but is subject to errors, omissions, changes in price, condition, sale, or withdrawal without notice. No statement is made as to the accuracy of any description. All measurements and square footages are approximate. This is not intended to solicit property already listed. Nothing herein shall be construed as legal, accounting or other professional advice outside the realm of real estate brokerage.



200 E 59 ST #20D

Sutton Place

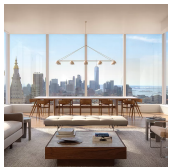
| | | | | | | | |
|-------------|---------|---------------|----------|-------------|-------------|----------------|-------------|
| Type | Condo | Status | Contract | Ask | \$3,850,000 | Initial | \$3,850,000 |
| Sqft | 1,555 | PPSF | \$2,476 | Beds | 2 | Baths | 2.5 |
| Fees | \$5,654 | DOM | 27 | | | | |



130 WILLIAM ST #45D

Financial District

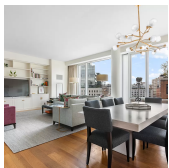
| | | | | | | | |
|-------------|---------|---------------|----------|-------------|-------------|----------------|-------------|
| Type | Condo | Status | Contract | Ask | \$3,825,990 | Initial | \$3,825,990 |
| Sqft | 1,736 | PPSF | \$2,204 | Beds | 3 | Baths | 3 |
| Fees | \$3,716 | DOM | 11 | | | | |



15 E 30 ST #33E

Nomad

| | | | | | | | |
|-------------|---------|---------------|----------|-------------|-------------|----------------|-------------|
| Type | Condo | Status | Contract | Ask | \$3,800,000 | Initial | \$3,800,000 |
| Sqft | 1,402 | PPSF | \$2,711 | Beds | 2 | Baths | 2.5 |
| Fees | \$4,751 | DOM | 69 | | | | |



311 W BROADWAY #7B

Soho

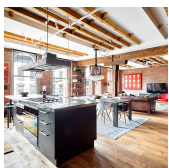
| | | | | | | | |
|-------------|---------|---------------|----------|-------------|-------------|----------------|-------------|
| Type | Condo | Status | Contract | Ask | \$3,750,000 | Initial | \$3,750,000 |
| Sqft | 2,110 | PPSF | \$1,778 | Beds | 3 | Baths | 3 |
| Fees | \$6,832 | DOM | 76 | | | | |



450 E 52 ST #9

Turtle Bay

| | | | | | | | |
|-------------|---------|---------------|----------|-------------|-------------|----------------|-------------|
| Type | Coop | Status | Contract | Ask | \$3,500,000 | Initial | \$7,500,000 |
| Sqft | 2,900 | PPSF | \$1,207 | Beds | 3 | Baths | 2.5 |
| Fees | \$8,864 | DOM | 1,544 | | | | |



262 MOTT ST #4NW

Nolita

| | | | | | | | |
|-------------|---------|---------------|----------|-------------|-------------|----------------|-------------|
| Type | Condo | Status | Contract | Ask | \$3,500,000 | Initial | \$3,500,000 |
| Sqft | 1,500 | PPSF | \$2,334 | Beds | 2 | Baths | 2 |
| Fees | \$1,649 | DOM | 33 | | | | |

Compass is a licensed real estate broker and abides by Equal Housing Opportunity laws. All material presented herein is intended for informational purposes only. Information is compiled from sources deemed reliable but is subject to errors, omissions, changes in price, condition, sale, or withdrawal without notice. No statement is made as to the accuracy of any description. All measurements and square footages are approximate. This is not intended to solicit property already listed. Nothing herein shall be construed as legal, accounting or other professional advice outside the realm of real estate brokerage.



130 BEEKMAN ST # PHA

Financial District

| | | | | | | | |
|-------------|---------|---------------|----------|-------------|-------------|----------------|-------------|
| Type | Condo | Status | Contract | Ask | \$3,500,000 | Initial | \$3,450,000 |
| Sqft | 2,035 | PPSF | \$1,720 | Beds | 3 | Baths | 3 |
| Fees | \$3,918 | DOM | 318 | | | | |

Compass is a licensed real estate broker and abides by Equal Housing Opportunity laws. All material presented herein is intended for informational purposes only. Information is compiled from sources deemed reliable but is subject to errors, omissions, changes in price, condition, sale, or withdrawal without notice. No statement is made as to the accuracy of any description. All measurements and square footages are approximate. This is not intended to solicit property already listed. Nothing herein shall be construed as legal, accounting or other professional advice outside the realm of real estate brokerage.

© 2020 Compass. This report and information provided in this report are proprietary to Compass and may not be sold, used or reprinted, in whole or in part, without the prior written consent in each instance of Compass. Data is subject to revision. Sourced from Compass proprietary database. All rights reserved.

[compass.com](https://www.compass.com)